

Meffier Garden Residency – A Complete Overview for Homebuyers & Investors

If you've been exploring the Sohna (South Gurgaon) real estate market lately, you've probably come across the name **Meffier Garden Residency** quite often. And honestly, there's a reason everyone is talking about it. This project in **Garden Residency Sohna**, especially in the growing belt of **Garden Residency Sector 5** and **Garden Residency Sector 5 Sohna**, offers something that is becoming rare—independent low-rise floors combined with a modern lifestyle.

Let me break down everything you need to know in a simple, conversational way so you can decide whether **Meffier low-rise floors** are the right fit for you.

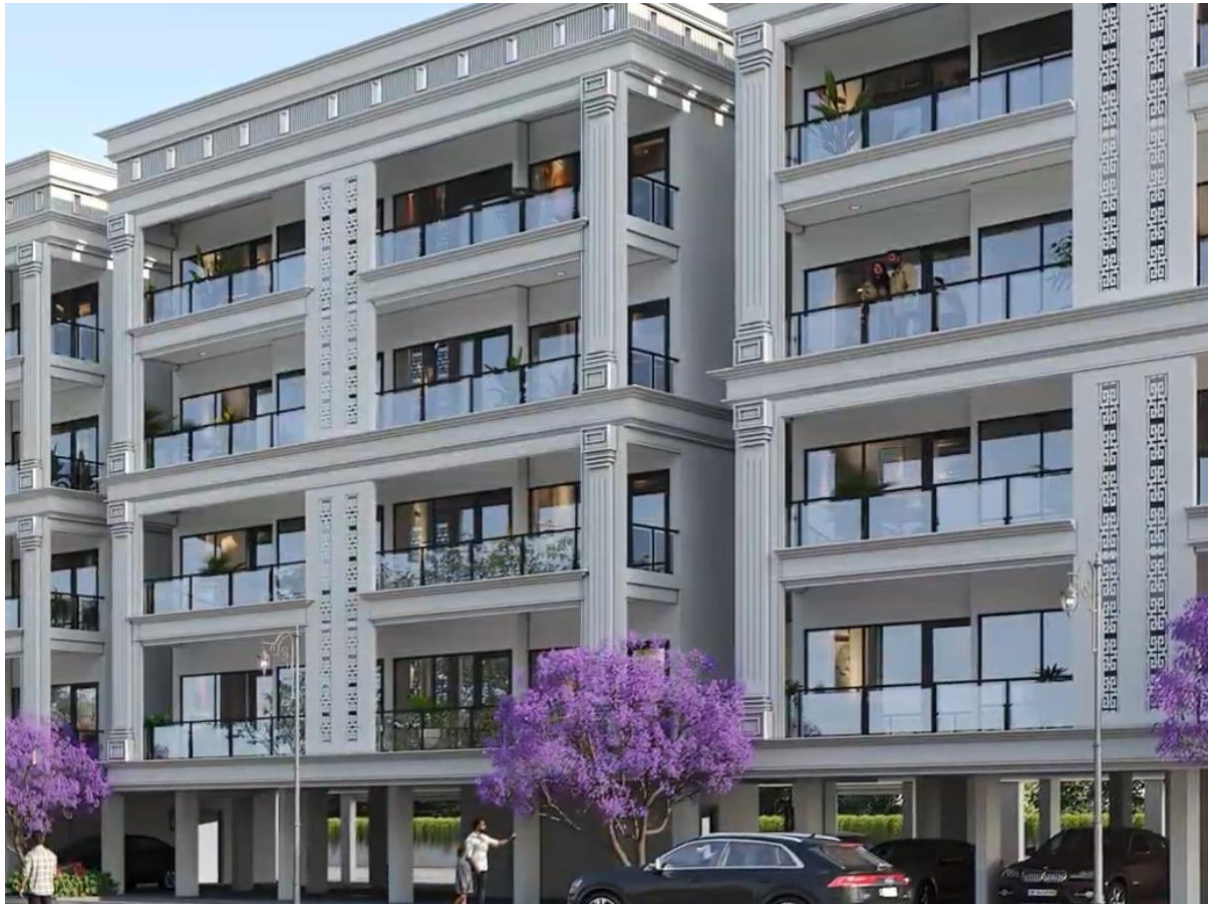


Project Overview of Meffier Garden Residency

Meffier Garden Residency is a low-rise residential project designed for people who want the spaciousness and privacy of independent floors but still want the security and amenities of a gated community. The project is spread across a sizeable land parcel in **Sector 5, Sohna**, and follows a low-density planning approach.

What makes [Meffier Garden Residency](#) floors stand out is the well-thought-out layout— independent floors, garden-facing units, open spaces, and a villa-like living experience without the premium price tag of luxury villas. In a market full of high-rise apartments, these **Low Rise Floors** appeal to families wanting privacy and people looking for long-term property appreciation.

The project includes modern amenities like landscaped parks, a clubhouse, wide internal roads, parking spaces, and security features—everything you'd want for comfortable everyday living.

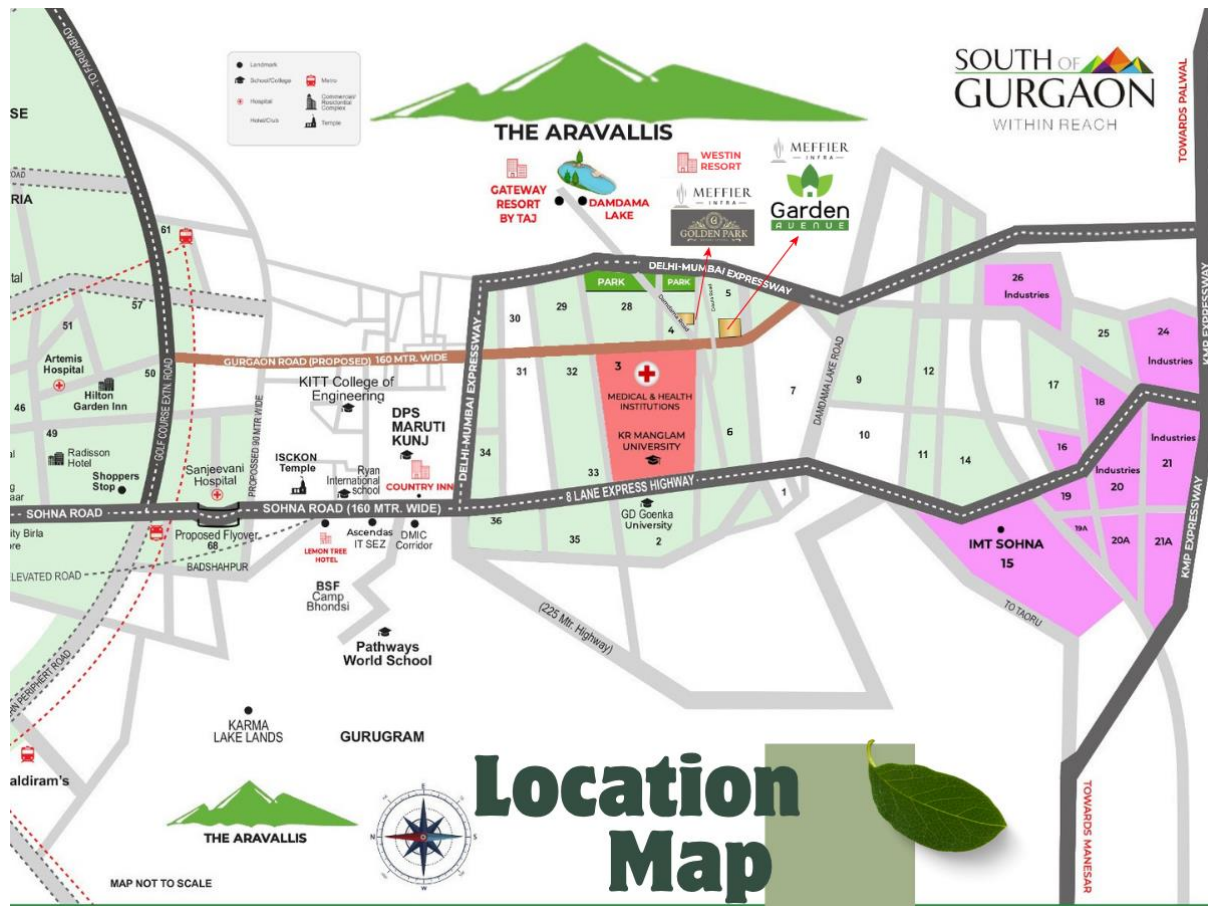


Configuration & Meffier Garden Residency Price List

The project mainly offers **2BHK** and **3BHK low-rise floors**. While the exact pricing can vary depending on the floor level and location within the project, here's a general breakdown to help you understand the investment bracket:

- **2 BHK Low Rise Floors** – Approximately **1250 sq. ft.**, starting around **₹1.25 Cr onwards**
- **3 BHK Low Rise Floors** – Approximately **1650 sq. ft.**, starting around **₹1.75 Cr onwards**

The cost might increase for premium units such as garden-facing floors, corner units, or floors with exclusive terrace rights. In the Sohna micro-market, this pricing is considered competitive, especially considering the low-rise, independent ownership pattern.



Key Features of Meffier Garden Residency

Let me highlight what uniquely adds value to these homes:

1. Low-Rise, Low-Density Living

Instead of high-rise buildings with hundreds of families, you get a calm, breathable environment. This is perfect if you prefer more personal space, better ventilation, and quieter surroundings.

2. Independent Floor Living

Each home is essentially like having your private space without sharing walls or floors with too many neighbors. This also offers better long-term resale potential.

3. Garden-Facing Residences

A key selling point—many floors are planned to directly face landscaped gardens. This is a huge advantage for people who prioritize green views, morning sunlight, and open spaces.

4. Clubhouse & Recreational Areas

Expect modern amenities like a clubhouse, gym, indoor games, outdoor recreational areas, kids' play zones, and walking trails—creating a complete community experience.



5. Quality Construction & Modern Interiors

The project promotes premium finishings, structured layouts, ample natural light, and contemporary fittings, making your home feel modern and luxurious.

6. Gated Security & Infrastructure

Round-the-clock security, wide internal roads, stilt parking, power backup, and a well-managed internal environment make daily living convenient and safe.

Location Advantages – Why Sector 5 Sohna is Growing Fast

The area of [Meffier Garden Residency Sohna](#) has been developing rapidly because of multiple government-backed infrastructure improvements. Here's why this location is becoming a residential hotspot:

Superb Connectivity

- Direct access to **Gurugram–Sohna Expressway**
- Quick reach to **KMP Expressway**
- Ease of access to the upcoming **Delhi–Mumbai Expressway**
- Smooth connectivity to Golf Course Road, NH-48, and key employment hubs

For someone working in Gurgaon but wanting peaceful living, this location hits the sweet spot.



Growing Social Infrastructure

Sector 5 Sohna and its surroundings have:

- Good schools
- Healthcare facilities
- Daily markets and retail spaces
- Restaurants, cafés, and recreational zones

This makes [Floors in Sohna](#) practical not only for investment but for actual day-to-day living.

Future Appreciation Potential

Sohna is often called “New Gurgaon Extension” because of the scale of development happening. With multiple expressways and commercial projects underway, it’s expected that property values in this belt will rise steadily over the next decade.



Why Invest in Meffier Garden Residency?

If I were personally explaining this to someone considering a property purchase, here’s what I would highlight:

1. Independent Floors at a Reasonable Price

Getting low-rise floors with independent ownership at current pricing is a strong deal in the NCR market.

2. Ideal for End-Users and Investors

If you’re buying for self-use, you get privacy, open spaces, and comfort. As an investor, appreciation is expected because Sohna is rapidly developing.

3. Peaceful Yet Connected

You live amidst greenery but can still reach Gurgaon quickly—this dual benefit is what many buyers look for today.

4. Better Resale Value

Independent low-rise floors generally retain stronger demand in the resale market than dense high-rise apartments.

5. High Rental Potential

Sohna's proximity to large employment hubs and universities ensures continuous rental demand from professionals and students.

Final Thoughts

Meffier Garden Residency or **Meffier Floors Sohna** brings together the comfort of low-rise, independent floors and the lifestyle of a modern gated community. With competitive pricing, improving connectivity, and strong appreciation potential, the project stands out as one of the promising residential options in the Sohna region.

If you're someone who values privacy, greenery, and long-term value creation, these **Meffier low-rise floors** in **Garden Residency Sector 5 Sohna** are definitely worth considering.